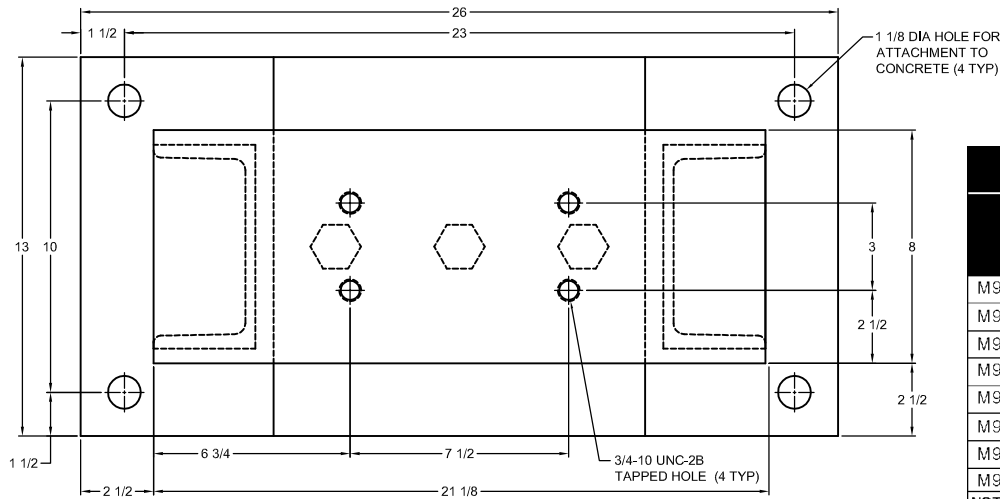


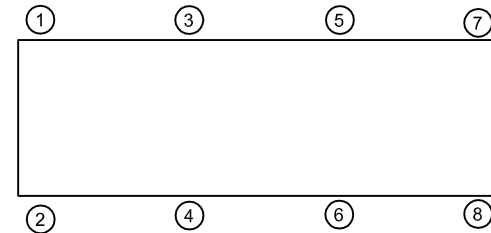
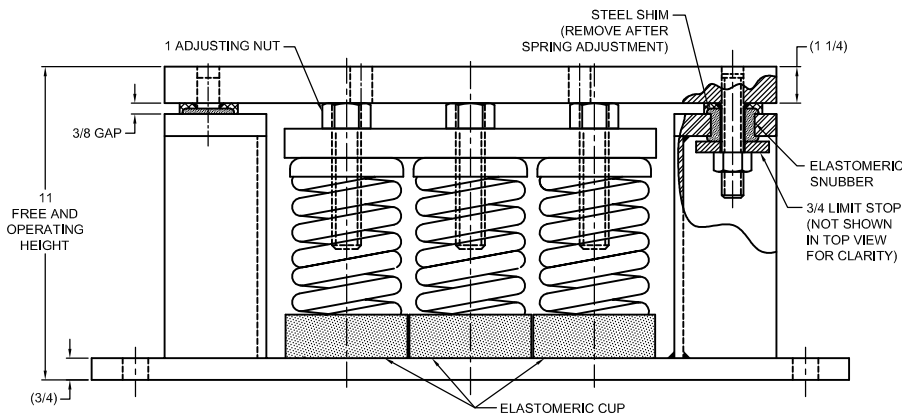
REV.	DESCRIPTION	DATE	BY



**TYPE M9S-2E 9-SPRING SEISMIC ISOLATORS FOR NOMINAL 2" DEFLECTION**

MODEL	RATED LOAD (LBS)	RATED DEFLECTION (IN)	SPRING RATE (LB/IN)	SPRING COLOR CODE
M9S-2F-9000	9000	2.00	4500	GREEN
M9S-2F-10350N <sup>1</sup>	10350	2.00	5175	GREEN/BLUE
M9S-2F-11475N <sup>1</sup>	11475	2.00	5738	GREEN/BLACK
M9S-2F-12600	12600	2.00	6300	GRAY
M9S-2F-13500N	13500	2.00	6750	GREEN/RED
M9S-2F-15075N <sup>1</sup>	15075	2.00	7538	GRAY/BLACK
M9S-2F-17100N <sup>1</sup>	17100	2.00	8550	GRAY/RED
M9S-2F-19800N <sup>1</sup>	19800	2.00	9900	GRAY/GREEN

**NOTES:**  
 1. TWO NESTED SPRINGS YIELD THIS LOAD. THE COLOR CODE INDICATED IS FOR OUTER SPRING/ INNER SPRING.



- NOTES:**
- STANDARD ISOLATOR FINISH: WELDED HOUSINGS AND CASTINGS- ONE COAT BLACK PAINT, SPRINGS- POWDER COAT, HARDWARE- ZINC ELECTROPLATE.
  - STATIC LOAD RATINGS ON SHEET 2 OF 2 ARE FOR GUIDANCE ONLY. VALUES ARE BASED ON TESTS OR CALCULATIONS WITH BASE PLATES BOLTED TO STEEL, FOR ATTACHMENT TO CONCRETE, CONSULT FACTORY.
  - RATED DEFLECTIONS ARE WITHIN 25% OF NOMINAL. HIGHER DEFLECTIONS ARE ALLOWED IF THEY MEET SPECIFICATIONS.

ISOLATOR SELECTIONS	
LOC 1:	LOC 2:
LOC 3:	LOC 4:
LOC 5:	LOC 6:
LOC 7:	LOC 8:
CUSTOMER EQP'T. TAG:	

NOTE: MATERIAL SHOWN IS FOR (1) SET.

OTHER MATERIALS, COMPOUNDS, OR FINISHES WITH EQUAL OR SUPERIOR PROPERTIES MAY BE SUBSTITUTED AS THEY BECOME AVAILABLE.

**CERTIFIED FOR:**

JOB NAME: \_\_\_\_\_  
 CUSTOMER : \_\_\_\_\_  
 CUSTOMER P.O.: \_\_\_\_\_  
 SALES ORDER: \_\_\_\_\_

**MODEL M9S-2F 9000-19800 LBS.  
 VIBRATION ISOLATOR SEISMIC  
 RESTRAINT  
 2 INCH DEFLECTION**



**THE VMC GROUP**  
*The Power of Together*  
 Bloomingdale, NJ 07403  
 Houston, TX 77041

SCALE:  
**NONE**  
 SHEET:



DRAWING NO.: \_\_\_\_\_ REVISION

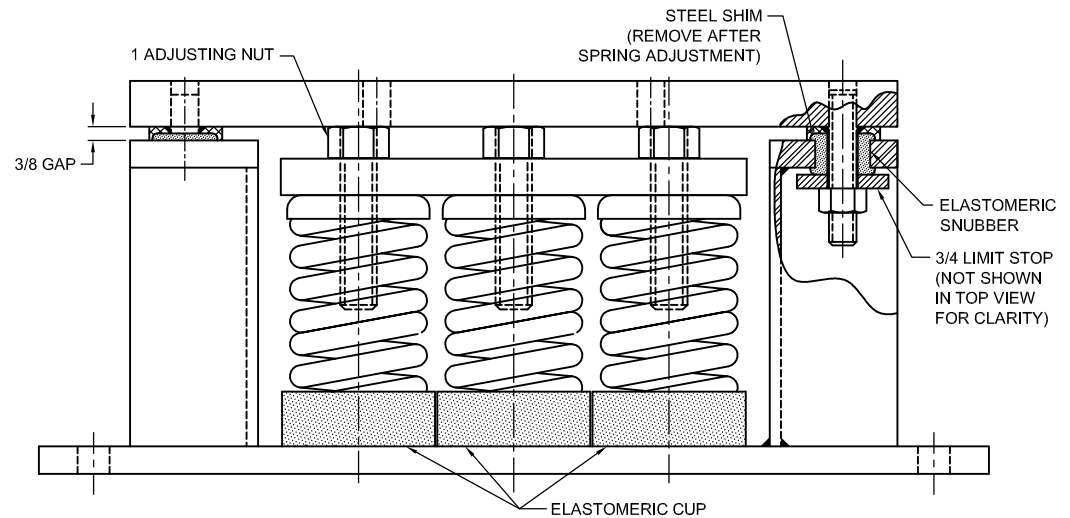
REV.	DESCRIPTION	DATE	BY

INSTALLATION AND ADJUSTMENT INSTRUCTIONS



- 1) LOCATE MOUNTING AS SPECIFIED ON INSTALLATION DRAWING.
- 2) ATTACH MOUNTS TO SUPPORT STRUCTURES.
- 3) PLACE EQUIPMENT ON MOUNTS.
- 4) LOOSEN LIMIT STOP NUTS (DO NOT REMOVE).
- 5) TURN ADJUSTING NUT (MAINTAIN EVEN LOADING ON ALL ADJUSTING NUTS).
- 6) REPEAT STEPS 1 THROUGH 5 GOING FROM MOUNT TO MOUNT UNTIL EQUIPMENT IS RAISED SUFFICIENTLY TO PERMIT REMOVAL OF STEEL SHIMS.
- 7) CHECK LEVEL OF EQUIPMENT & ADJUST MOUNTS ACCORDINGLY.
- 8) AFTER ALL MOUNTS HAVE BEEN ADJUSTED TIGHTEN LIMIT STOP NUT TO MAINTAIN GAP AS ILLUSTRATED.

NOTES:

- 1) TOP PLATE OF HOUSING MUST BE FULLY LOADED BY THE EQUIPMENT SUPPORTING BRACKET OR STRUCTURAL STEEL BASE.



OTHER MATERIALS, COMPOUNDS, OR FINISHES WITH EQUAL OR SUPERIOR PROPERTIES MAY BE SUBSTITUTED AS THEY BECOME AVAILABLE.

<b>CERTIFIED FOR:</b> JOB NAME: _____ CUSTOMER: _____ CUSTOMER P.O.: _____ SALES ORDER: _____	<b>MODEL M9S-2F 9000-19800 LBS.                  VIBRATION ISOLATOR SEISMIC                  RESTRAINT                  2 INCH DEFLECTION</b>	 <b>THE VMC GROUP</b> <i>The Power of Together</i> Bloomingdale, NJ 07403 Houston, TX 77041	SCALE: NONE	
			SHEET:	